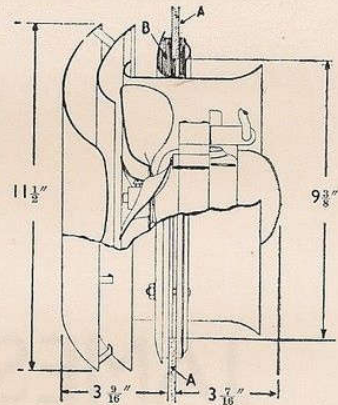
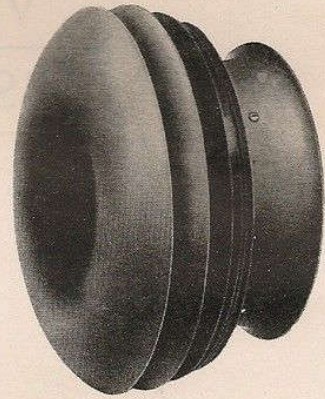
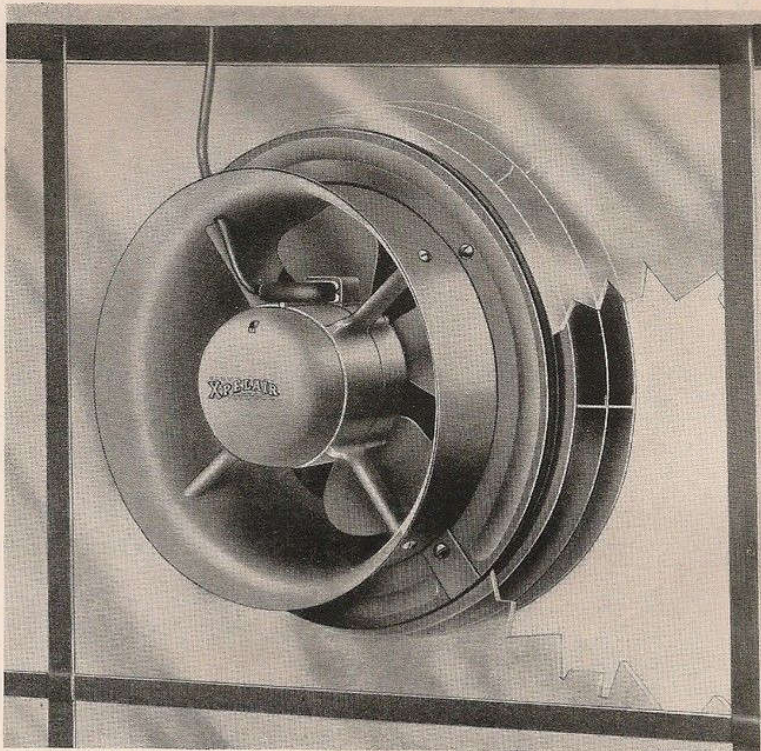


THE XPELAIR WINDOW FAN

A **G.E.C.** PRODUCT

Simplifies Ventilation



A—Window Glass (at least 32oz.)
B—Rubber Cushion

When a *simple* means of efficient ventilation is wanted, the Xpelair Window Fan is the answer. Its installation is simplicity itself. No hole in the wall is required. The unit is easily fixed in a window pane or thin partition. It is ideal for offices, restaurants, hotels or domestic kitchens. It extracts vitiated air at the rate of 14,000 cu. ft./hr.—confirmed by N.P.L. test. It is silent; consumes only 25 watts. The patent external cowl provides *complete* weather-protection. A.C. or D.C. Finished in bronze cellulose or ivory enamel.

- Extracts 14,000 cu. ft. air per hour
- Consumes only 25 watts
- Performance confirmed by
NATIONAL PHYSICAL
LABORATORY TEST

THE GENERAL ELECTRIC CO. LTD. MAGNET HOUSE, KINGSWAY, LONDON, WC2